

ISOLFON *Whisper*



Sound Absorbing Polyethylene Foam

ISOLFON - Whisper : Closed cell laminated polyethylene foam, that effectively traps sound and reduces the reverberation time.



ISOLFON - Whisper

ISOLFON - Whisper is a closed cell polyethylene foam which has cells that are subsequently opened through the manufacturing process, resulting in a highly efficient sound absorbent material with many unique features.

The product can be supplied in 2 different types according to fire resistance:

- ISOLFON-Whisper **FR** (fire rating according to DIN 4102:B1, EN 13501-1 B, S2 d0)

Color: White and black

- ISOLFON-Whisper **DB** (fire rating FMV SS 302)

Color: Grey

For outdoor applications please contact us

TECHNICAL CHARACTERISTICS

Slab Dimensions: 120x240 cm

Thickness: 20, 25, 40 & 50 mm

Color: White / black for FR and Grey for DB

Fire Resistance: For FR type: DIN 4102:B1, EN 13501-1 B, S2 d0

For DB type: FMV SS 302

Characteristics: Moisture resistant, High sound absorption, low weight, easy fabrication/ converting, no need for water shield, fiber free, Self standing / structurally independent, washable surface, fire retardant

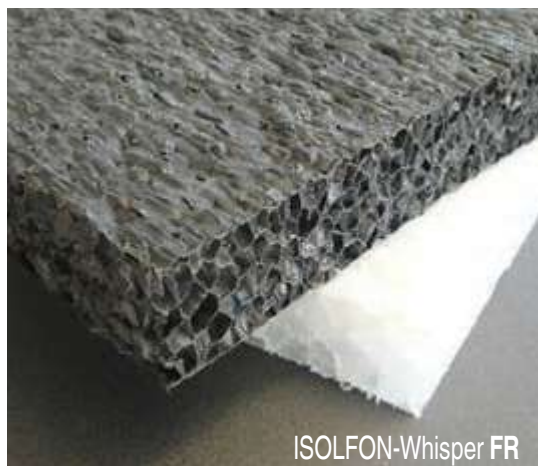
ADVANTAGES

High Sound Absorption: The form of the closed cell laminated polyethylene foam, provides excellent acoustical properties.

Water Resistant: Provides unaltered and sustained performance in wet or humid conditions.

Fire Reaction: Meeting all the typical required Fire Norms with in: Transportation, Industrial vehicles, Marine, Trains, Appliances & Electronics, Building and Construction.

Low installation costs: Due to the light weight and its self supporting structure – it is very easy to be cut and be install on site.



ISOLFON-Whisper FR





ISOLFON *Whisper* Sound Absorbing Polyethylene Foam

APPLICATIONS

Sound absorption in recording studios, home cinemas, night clubs, restaurants, indoor pools, gyms, car washing tunnels, shooting ranges, sports halls etc. It can also be applied as ceiling vertical baffles, high speed rail/motorway Noise barriers, internal air-ducts lining, ventilation and air conditioning – sound attenuators/ silencers specially where there is high humidity, etc. Moreover, it can be installed as self-supporting panels with mechanical support (expandable anchors with suitable washers) or liquid or spray adhesive. It is very easy to cut with a blade or a suitable saw.

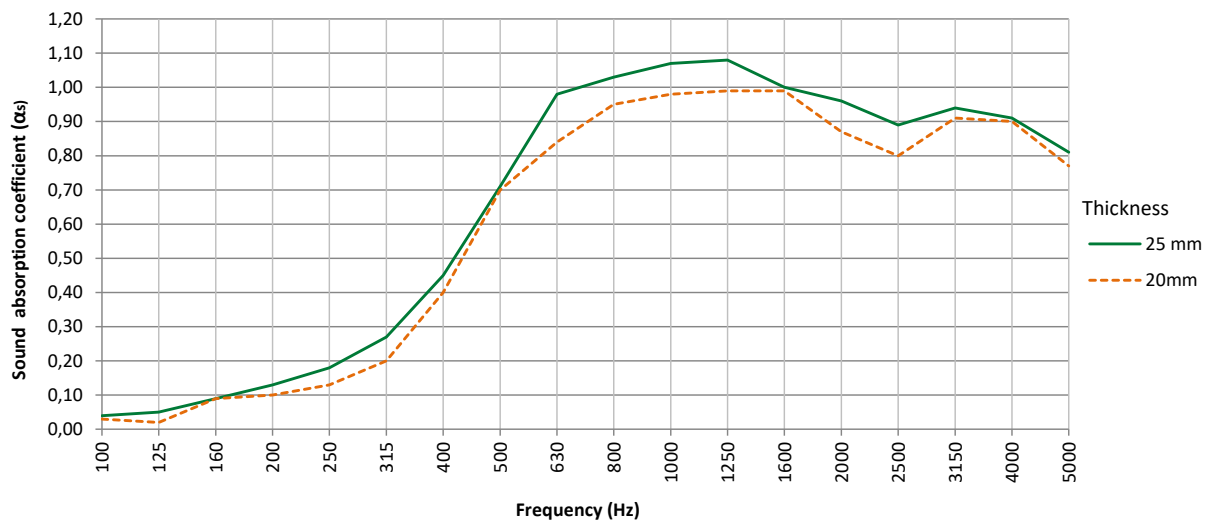
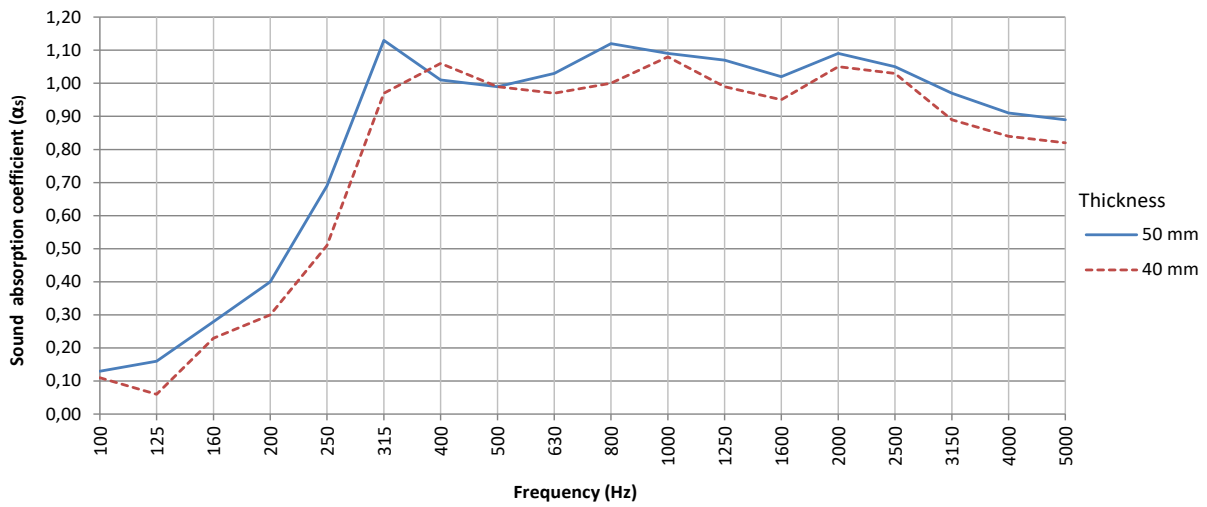
Typical applications



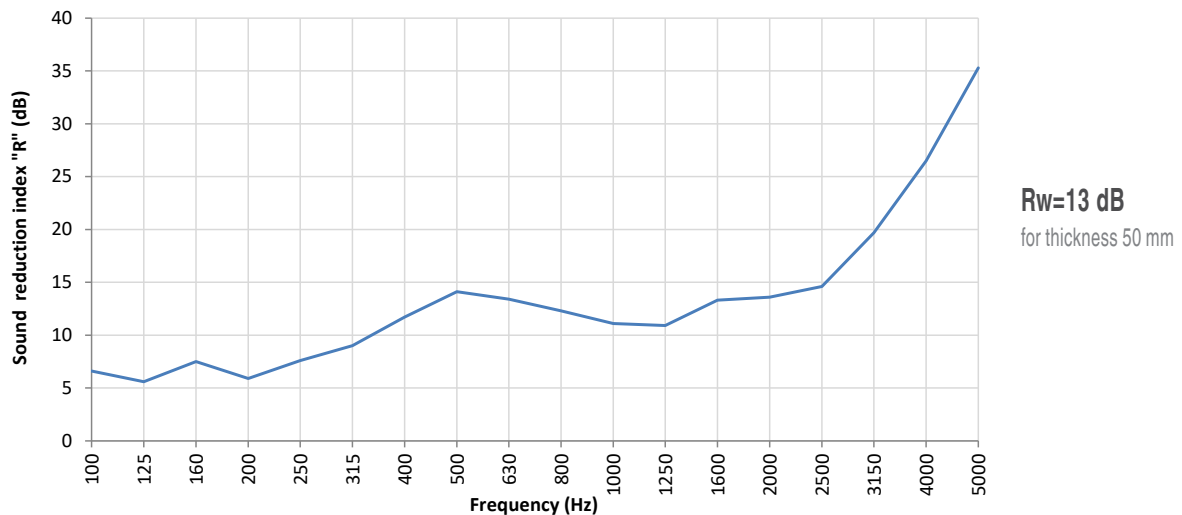


Acoustic properties

Reverberation Room Results according to EN ISO 354



Sound Reduction Results according to EN ISO 140 & ISO 717.1

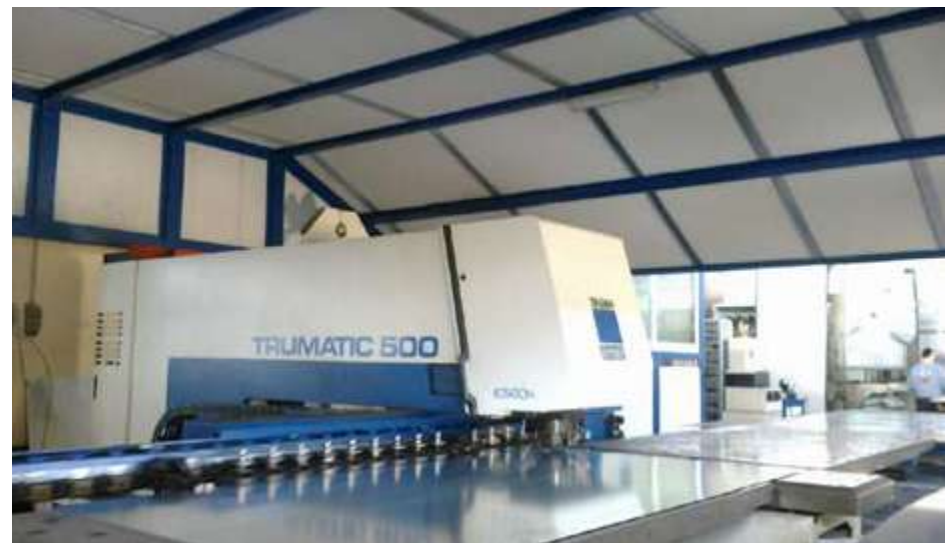


R_w = 13 dB
for thickness 50 mm

Certified by Institute Giordano S.p.A.



More applications





Technical specifications

| Physical Properties | Test Method | Unit | Typical Physical Properties |
|--|---|---------------------------------------|--|
| Nominal Density | ASTM D3575-08 Suffix W ISO 845:2006 | Kg/m ³ | 25 |
| Compressive Strength Vertical @ 25% | ASTM D3575-08 Suffix D ISO 7214:2007 | KPa | 7 12 |
| Compressive Strength 25% (4th compression) 50% (4th compression) 70% (4th compression) (100mm/min compression speed) | ISO 3386 1986 part 1 DIN 53577 | KPa | 3 7 25 |
| Compression Set | ASTM D3575-08 Suffix B (50% Compression) ISO 1856:2000 (25% compression) | % | < 30 < 20 |
| Cell Size | BS 4443/1 Met.4 | Cells/25mm | < 10 |
| Fire-test-response Characteristics (1) Transportation Automotive Building & Construction | TS EN 45545-2 NF F 16-101 DIN 54837 FMVSS 302 DIN 4102 EN 13501-1 | Class Class - Class Class | HL2 for flooring, HL1 for ceiling and wall. F1 S3, SR2, ST2 Pass B1 |
| Water Pick Up by Diffusion (RH > 95% - after 28 days) | UNI EN 12088 | Kg/m ² | < 3 |
| Water Pick Up by Diffusion (RH > 95% - after 28 days) | UNI EN 12088 | Volume % | < 5 |
| Thermal Conductivity @ 23°C @ -5°C | ASTM D3575-08 Suffix V ISO 8301 | W/mK | 0.104 0.082 |
| Thermal stability (24hrs at 70°C) | ASTM D3575-08 Suffix S ISO 2796 | % | < 3 |
| Tensile Strength @ Peak | ASTM D3575 Suffix T ISO1798 | KPa | 130 |
| Tensile Elongation | ASTM D3575 Suffix T ISO1798 | % | 60 |
| VOC Emissions | AFNOR NF EN ISO 16000-9 | Class | A+ |

(1) These numerical laboratory fire-test-response characteristics are not intended to reflect hazards presented by this material under actual fire conditions.

NOTICE: While values shown are typical of this product, they should not be construed as specification limits.
User should test each application to determine suitability of the product for the intended use.



In TUNE with YOUR needs

ALPHA ACOUSTIKI Ltd. | 09/2021

Our technical department (tech@alphacoustic.com) will be happy to assist you find the best solution to your sound insulation problems.



CONTACT US

| | | |
|--|--|---|
| | | |
| ALPHA ACOUSTIKI Ltd Athens, Greece | T: +30 210 6779875 F: +30 210 6779269 | info@alphacoustic.com www.alphacoustic.com |

